



**KHERIA AUTOCOMP  
LIMITED**

## **Interior Components**

### **PRODUCT RANGE**



**A Pillar**



**C Pillar**



**Middle Insert Rear**



**Middle Insert Front**



**Trim Comp**



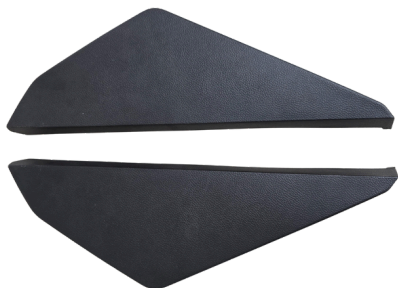
**Tail Gate**



**KHERIA AUTOCOMP  
LIMITED**

## **Interior Components**

### **PRODUCT RANGE**



**I/P Panel**



**Outer GB**



**I/P Centre Panel**



**Magazine Pocket**



**Upper Support**



**Map Pocket**



**KHERIA AUTOCOMP  
LIMITED**

## **Interior Components**

### **PRODUCT RANGE**



**Bracket Reinfo AT**



**Planum Cover**



**Defroster Grill Panel**



**Bracket Reinfo MT**



**Hood Trim**



**Adapter**



**KHERIA AUTOCOMP  
LIMITED**

## **Exterior Components**

### **PRODUCT RANGE**



**Front Fender YTB**



**Rear Door YTB**



**Front Bumper**



**Spoiler**



**Rub Rail Cladding**



**Hood Trim**





**KHERIA AUTOCOMP  
LIMITED**

## **Exterior Components**

### **PRODUCT RANGE**



**Front Fender YY8**



**Rear Fender YY8**



**Base**



**Seal**



**Planum**



**Rub Rail Front**



**KHERIA AUTOCOMP  
LIMITED**

## ***Under Hood Components***

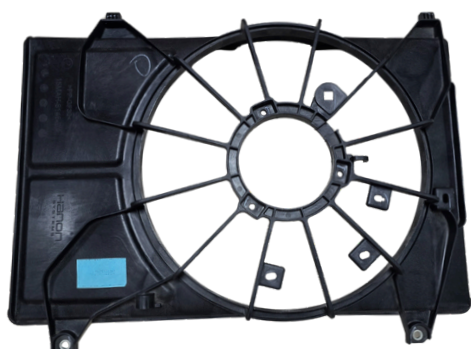
### **PRODUCT RANGE**



**Radiator Fan**



**P Tank Upper**



**Shroud**



**Adapter**



**Nano Fan**



**P Tank Lower**



**KHERIA AUTOCOMP  
LIMITED**

## **HVAC Components**

### **PRODUCT RANGE**



**Rotary Door**



**Air Duct**



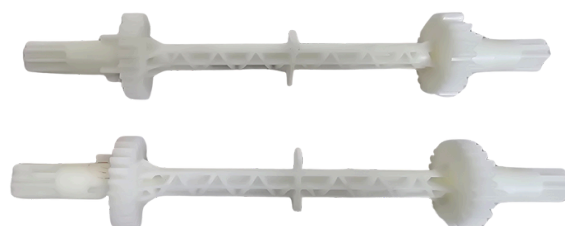
**Aspirator Hose**



**Door Sub Assembly**



**Holder Filter**



**Shaft**



**KHERIA AUTOCOMP  
LIMITED**

## **HVAC Components**

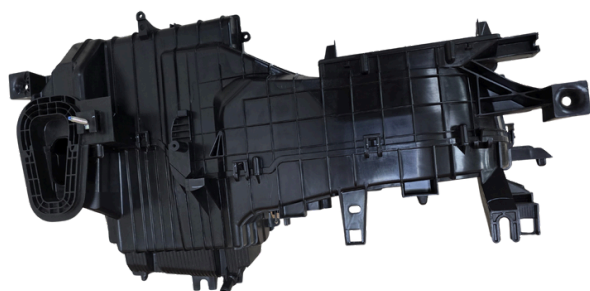
### **PRODUCT RANGE**



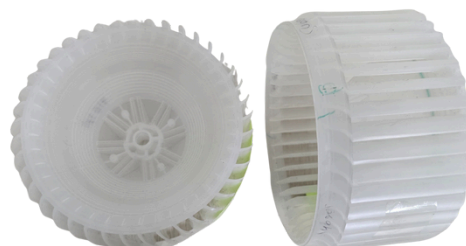
**Air Intake**



**Cover Heater**



**Blower Case**



**Fan Blower**



**Fad**



**Cam**



**KHERIA AUTOCOMP  
LIMITED**

## **HVAC Components**

### **PRODUCT RANGE**



**Heater Case**



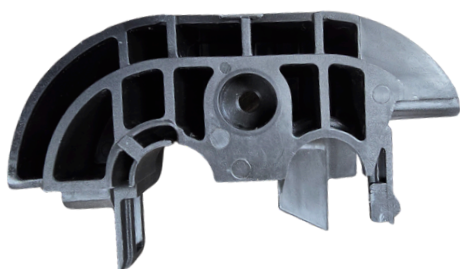
**Lever Foot**



**Rotary Door Sub**



**Lever YSD**



**Clamp Upper**



**Clamp Lower**





**KHERIA AUTOCOMP  
LIMITED**

## Lighting Components PRODUCT RANGE



Housing Upper



Housing Lower



Housing Nexon



Housing Siera



Reflector Honda



Pes Ring





**KHERIA AUTOCOMP  
LIMITED**

## **Lighting Components**

### **PRODUCT RANGE**



**Bearing Shell**



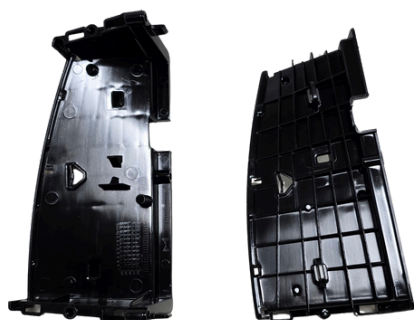
**Bracket**



**Aiming Frame**



**Tubus**



**Lens Bar Carrier**



**Housing YRC**



**KHERIA AUTOCOMP  
LIMITED**

## **Lighting Components**

### **PRODUCT RANGE**



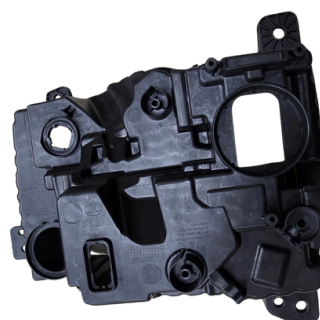
**YXA Reflector**



**Light Bar Carrier**



**Reverse Bar Carrier**



**H L Housing**



**HB3 Pes Frame**



**Lower Housing HV**